

ABC Distribution Box

for pole or wall aerial service connections



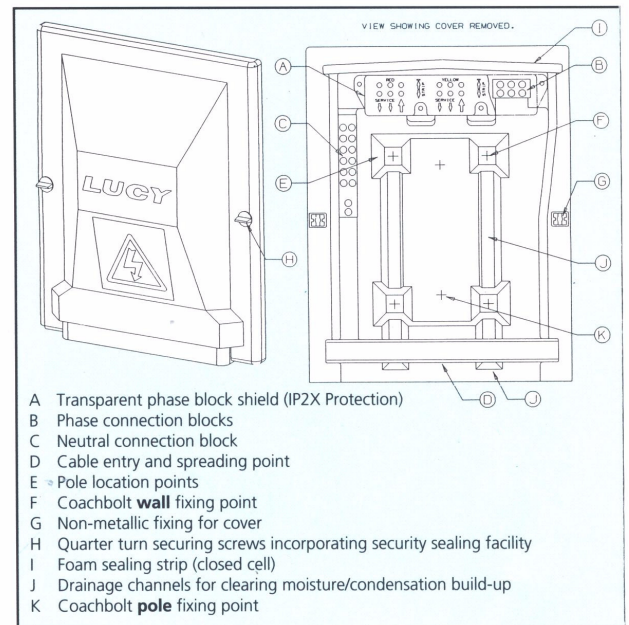


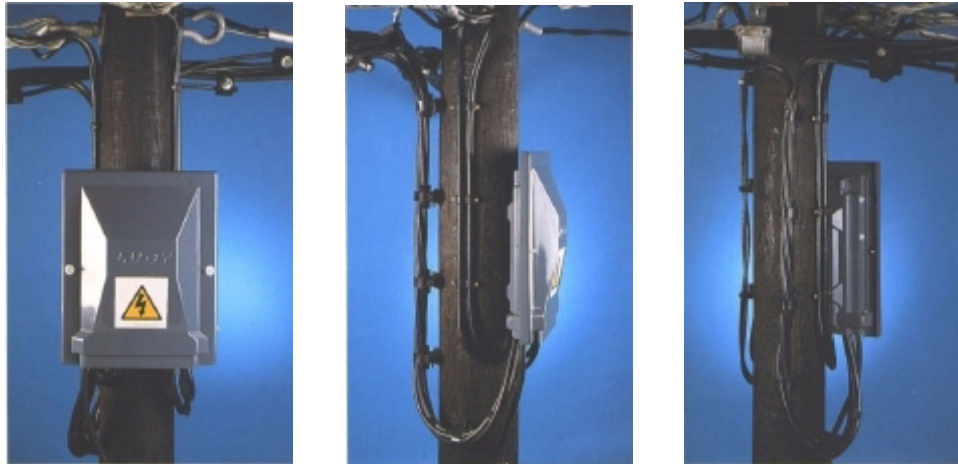
◀ Pole mounted distribution box with a 50mm aerial bundled conductor (ABC) cable connection showing various sizes and types of aerial service connections radiating from it. An 'all-insulated' jointing technique has been employed.



▲ Wall mounted distribution box with incoming 3-core 50mm PVC copper concentric CNE cable and service connections, a mixture of 35mm, 25mm and 16mm PVC copper concentric and hybrid CNE cables (the insulated cover over the neutral has been removed to show the full details).

The neat answer to aerial cable connections





*profile
Aerial
Bundled
Conductor
service box*

A all-insulated service distribution box has been designed for PME systems. Complies with the Electricity Association Standard 43-14. Connections may be made to aerial bundled conductors (ABC), open wire conductor overhead line distribution systems, or underground supply cables. Quick and easy installation on pole or wall, with adequate space for incoming conductors, service cables and any later connections.

Key features:

EXTERNAL

- Strong, all weather, flame-retardant, vacuum-formed thermoplastic construction - providing excellent all round impact durability.
- Captive quick release fasteners - retaining the box cover which hinges back on two removable plastic ties.
- Non-metallic security sealing straps - provided to deter unauthorised access. They secure the cover and fasteners to the base by means of crimped sealing wire.
- Low profile angular styling - prevents snow build-up and presents a modern slim-line appearance.
- Drainage channels along the back of the unit - prevent condensation/moisture build-up. These are screened against wire insertion.
- Compact dimensions - height 384mm, width 309mm, depth 106mm.

INTERNAL

- Phase connections in the top of the box - give maximum length for the incoming 50mm conductors and up to nine service cables balanced over three phases.
- Permanent polycarbonate cover - protects all phase terminals with holes for access to the captive 4mm hexagon socket pinching screws. The cover has bendable tags to permit cable entry and screen unused live terminals against accidental contact. The neutral block has a deflective PVC cover.
- Closed cell polyether foam sandwich - for self-sealing cable entry and exit.
- Serrated bores for all terminal blocks.
- Special apertures in the base - allow the incoming supply cable to divide outside and then enter the box to line up with incoming tunnel terminals in the phase blocks. Alternatively, the larger apertures permit the supply cable to enter directly and divide inside the box.
- Protection to IP2X.
- An insulated operating tool is available for use with the box.



Lucy Switchgear is Britain's leading independent producer of electrical distribution equipment and principal supplier to the electricity supply authorities, both within the UK and overseas.